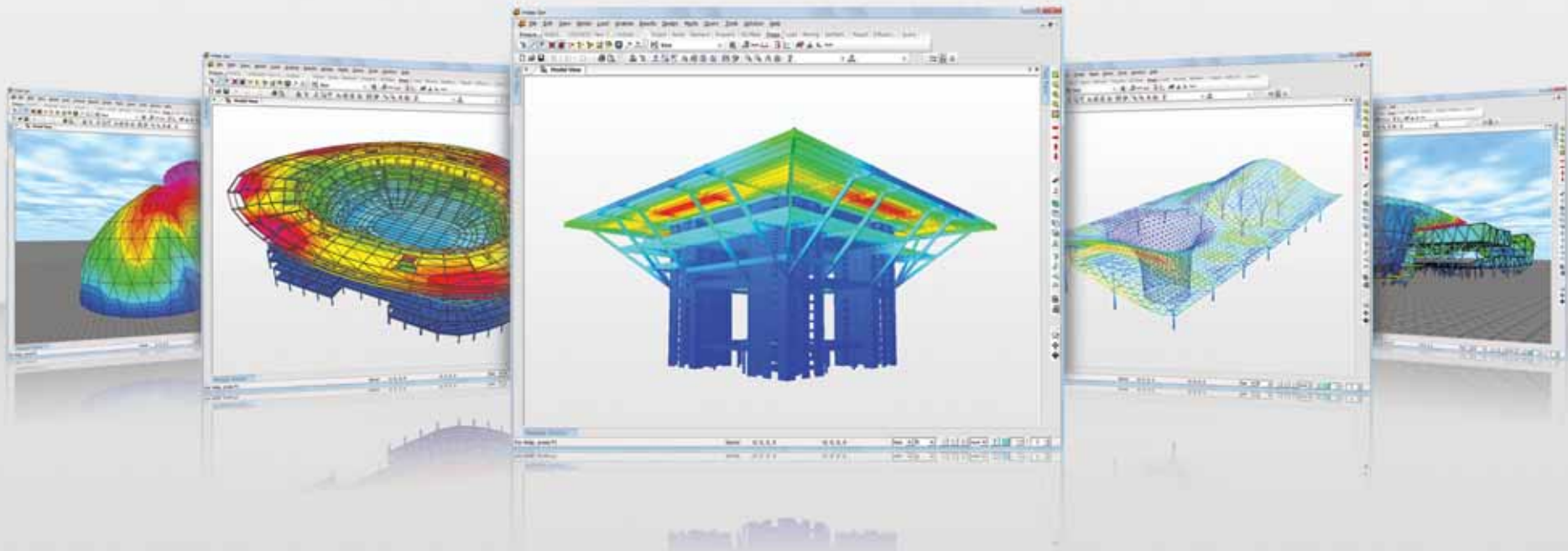


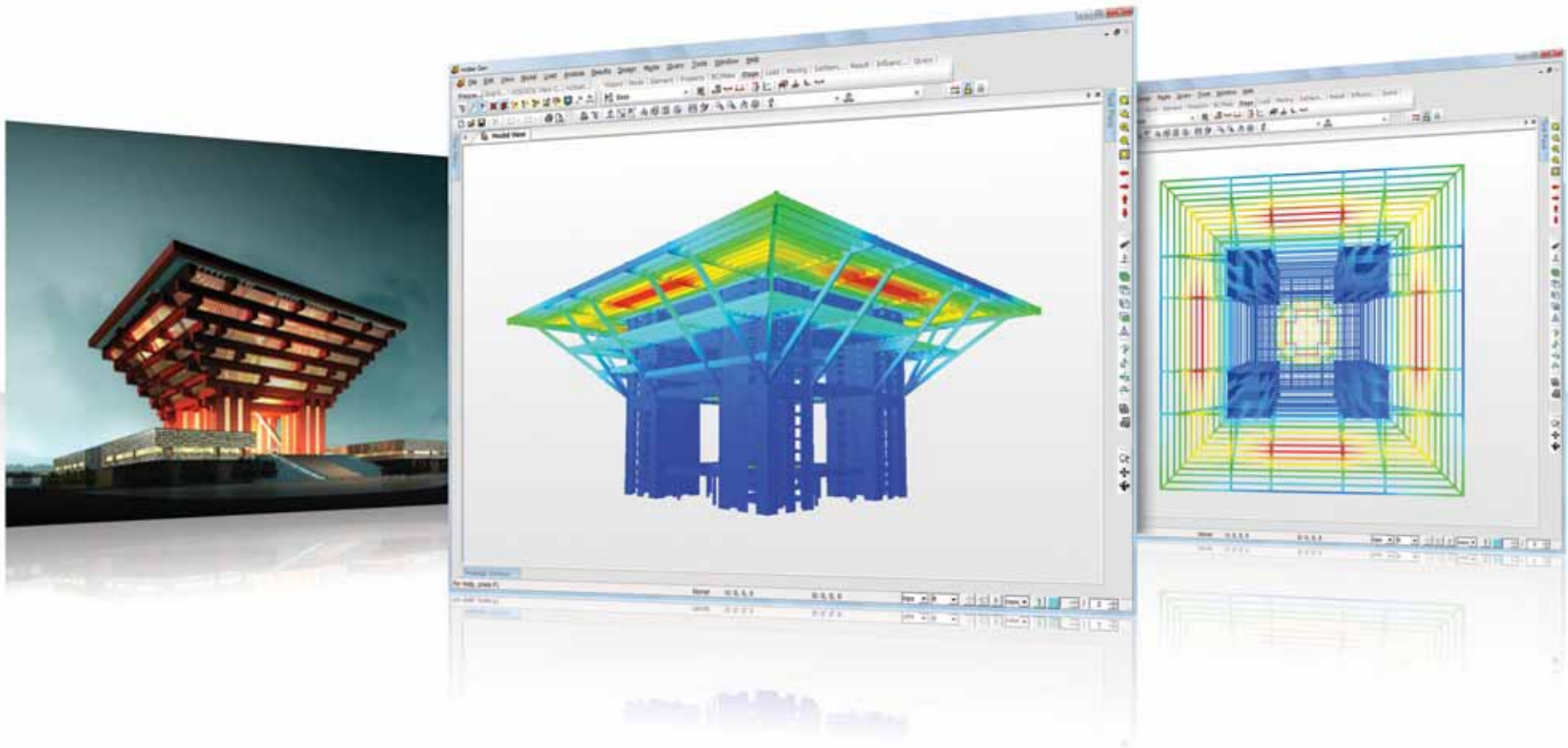
Shanghai World Expo 2010

Integrated Design System for Building and General Structures



China Pavilion Oriental Crown

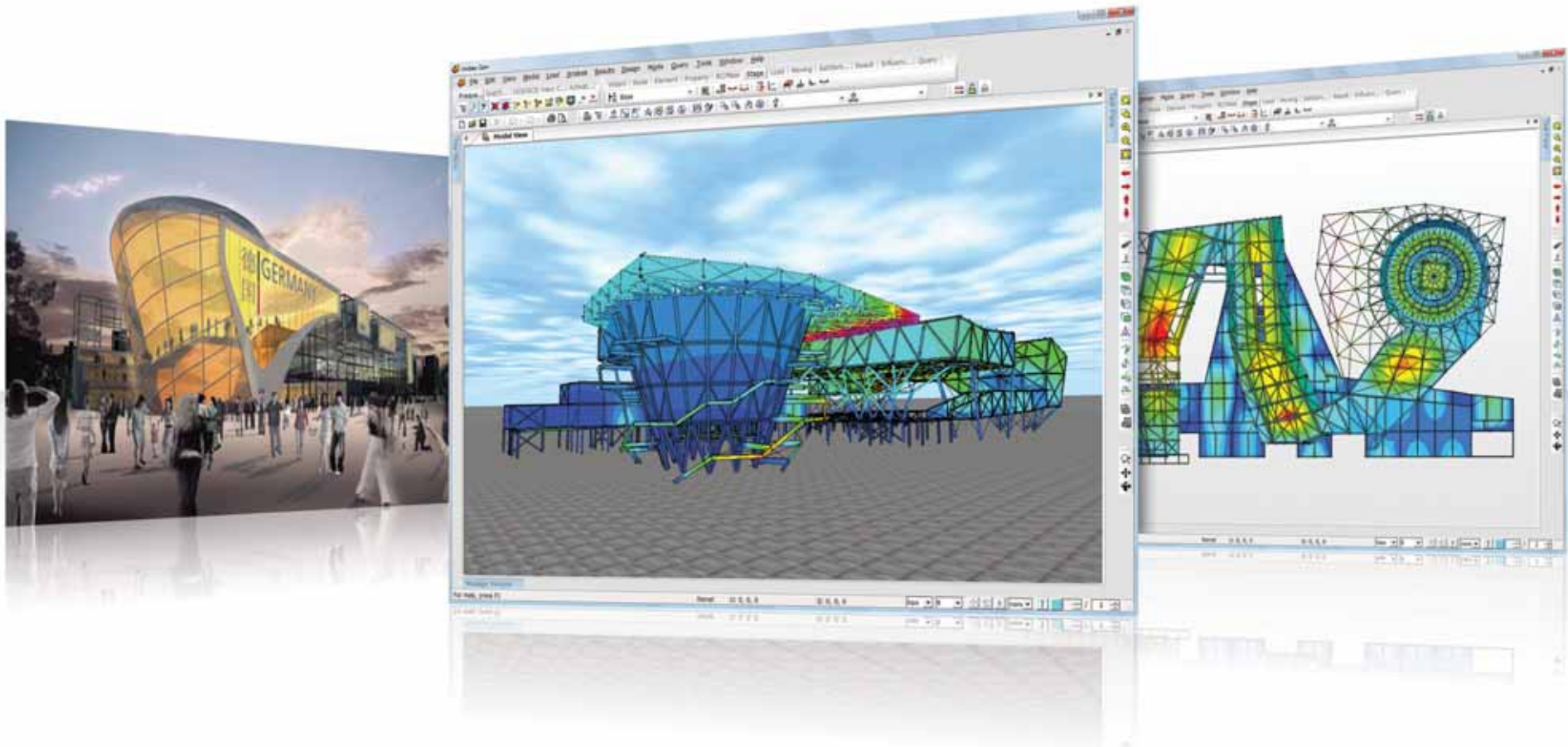
The China Pavilion is designed with the concept of "Oriental Crown." The traditional Chinese wooden structure element, Dougong brackets, is introduced. Its main colour is "Gugong (Forbidden City) Red" which represents the taste and spirit of Chinese culture. The China Pavilion consists of the 47,000-square-meter Chinese national pavilion, 38,000-square-meter Regional joint pavilion and 3,300-square-meter pavilion of Hong Kong, Macao and Taiwan.



Germany Pavilion

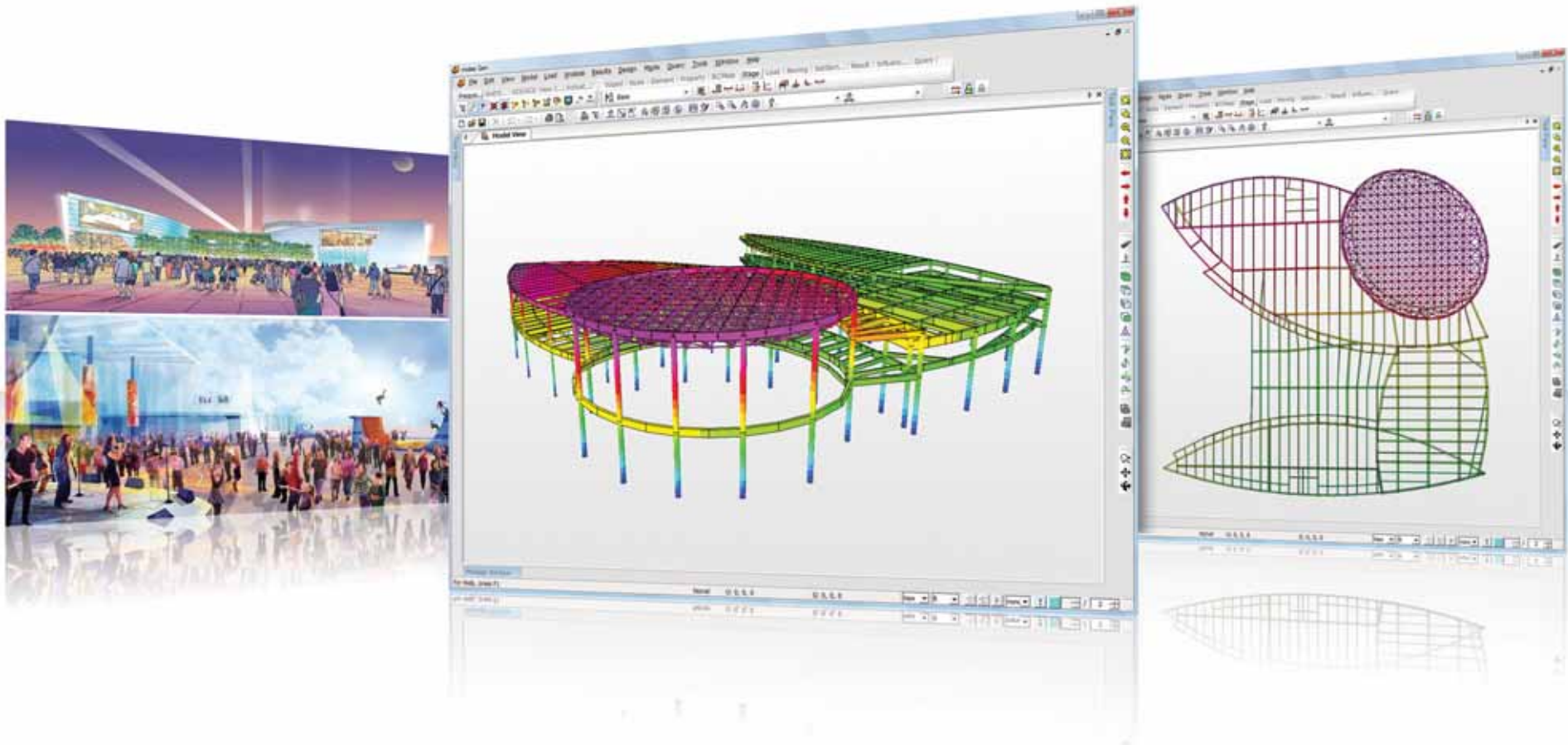
The 6,000-square-meter Germany Pavilion, named "Balancity," will showcase typical urban life in Germany and introduce how the country's products help solve urbanization problems.

The German government invested 30 million euros (US\$47.34 million) in the pavilion, said Dietmar Schmitz, commissioner general of the German Section in the Expo. Some German companies will also contribute.



USA Pavilion

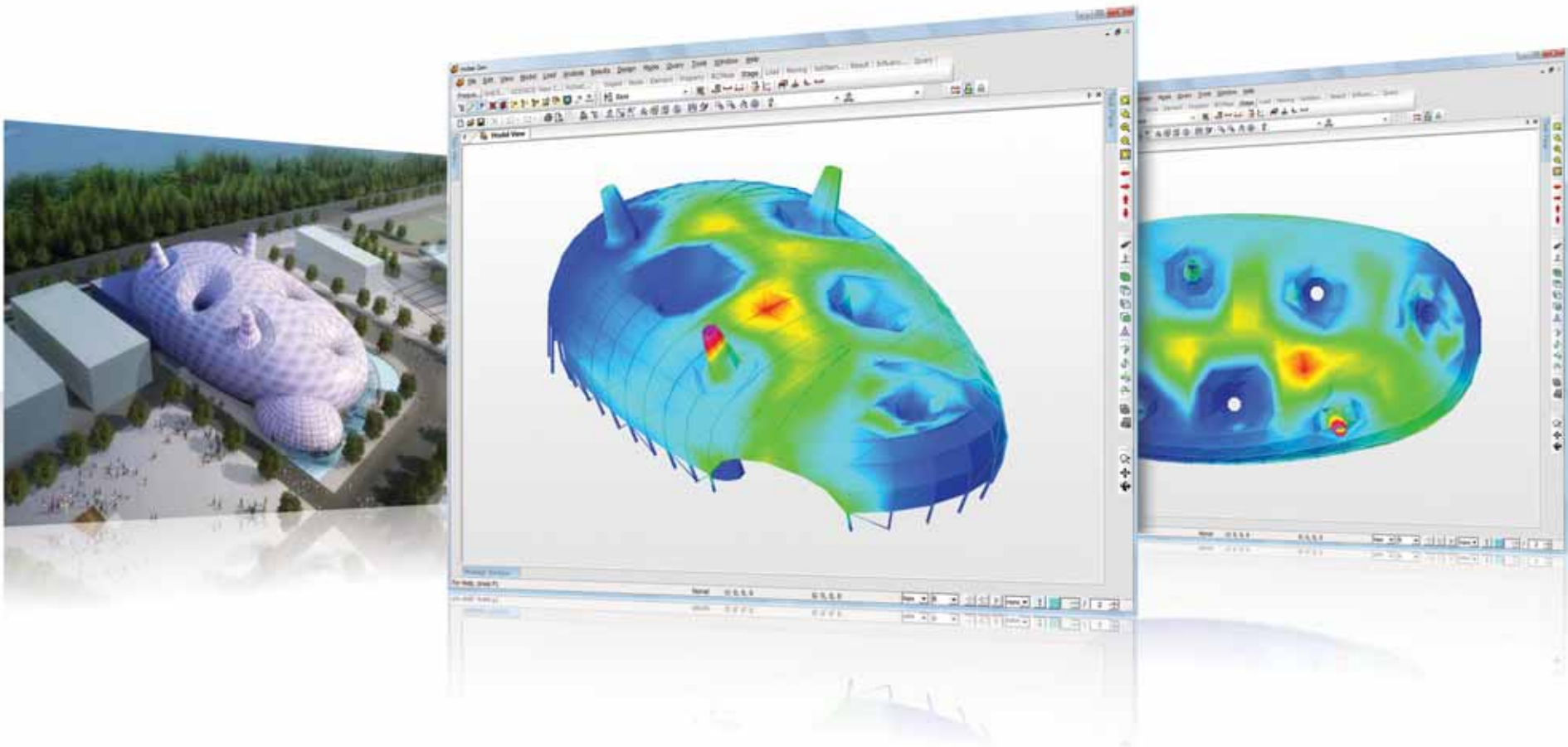
USA is expected to make their presence felt when they introduce their pavilion which covers an area of 6,000 square meters. The latest images of the USA Pavilion concept embraces a post-industrial Earth-in-the-balance effect equipped with the latest technology. Some of the technology that will be showcased includes: green building materials and process; sustainable procurement and agricultures;



Japan Pavilion

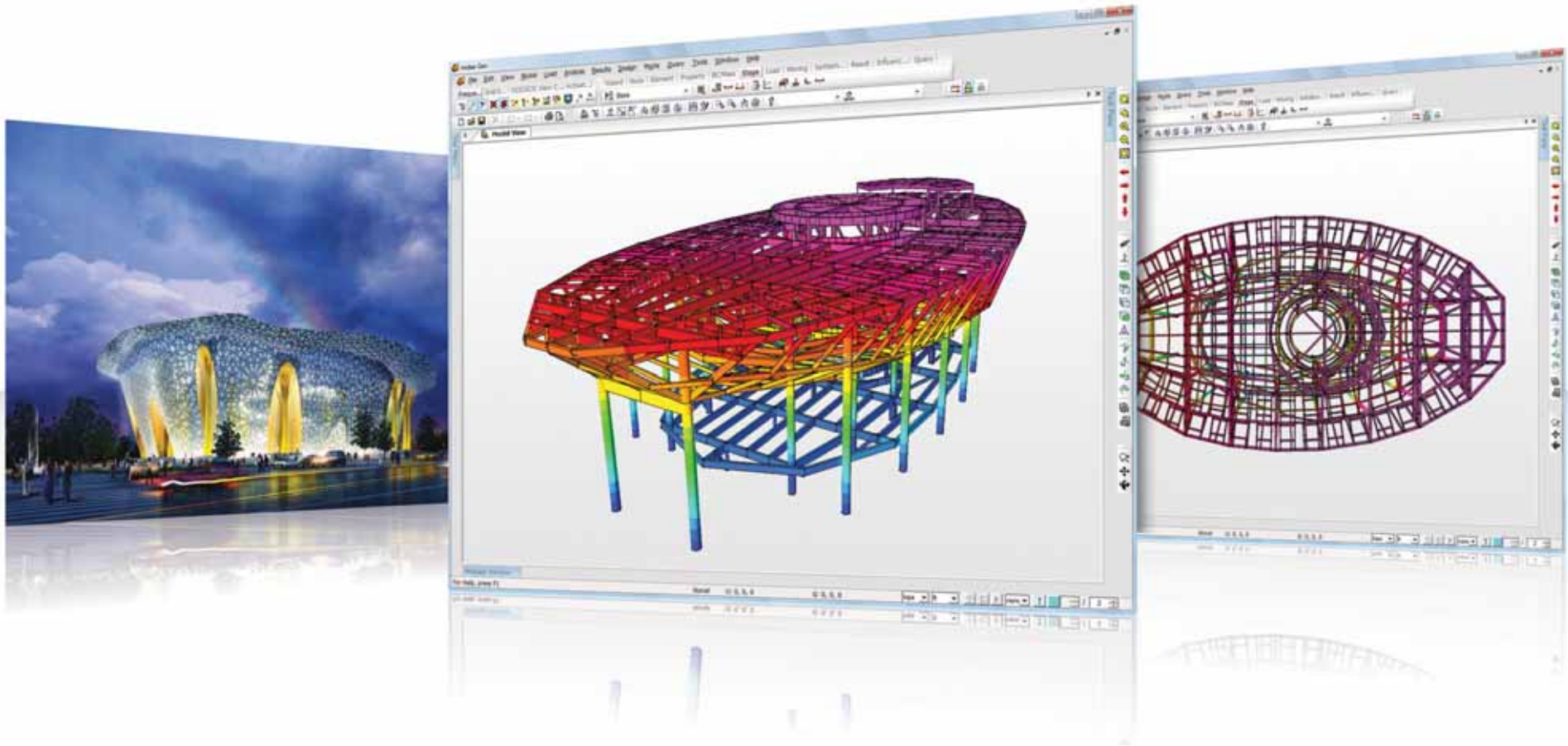
Japan Pavilion has secured a 6,000-square-meter plot at the Expo site. The 24-meter-high pavilion is the largest the country has ever built for a World Expo. It is also one of the largest pavilions at Expo 2010.

The pavilion will be divided into past, present and future exhibits. The country's semi-circular pavilion will make efficient use of natural resources with solar energy collection batteries and a double-layer membrane that can filter sunshine to coincide with its interpretation of how technology can better our lives.



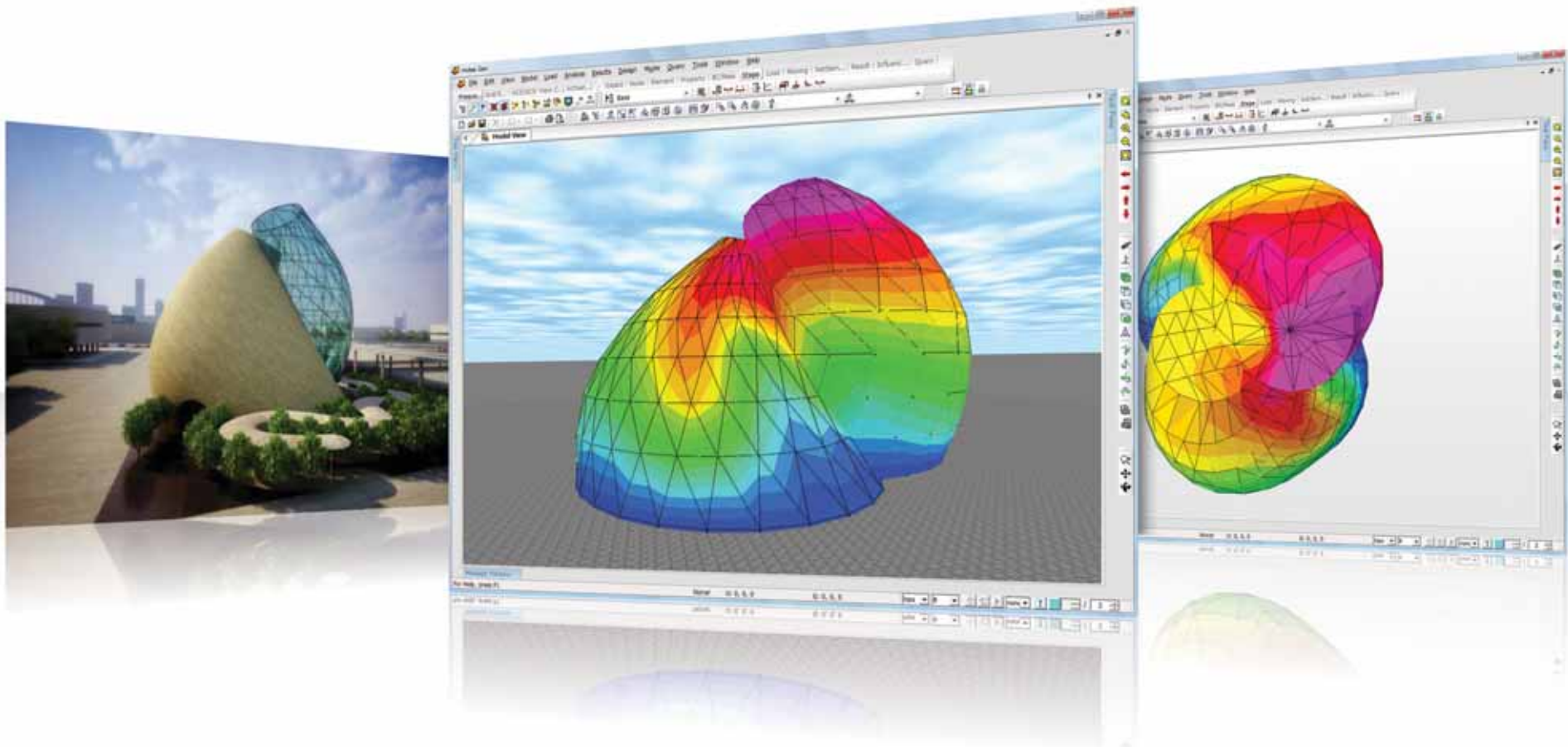
Saudi Arabia Pavilion

The Saudi Arabia Pavilion grows up as an elegant palace shining in the grand burning desert. The floating curved roof brings the thousands of audience to walk through the desert, date palms and rivers, to arrive at the curved main entrance at the south of the building. The natural condition and historical development of Saudi Arabia is represented by the stretched landscape inside and outside, and the curved slope and the hourglass in the central area as well.



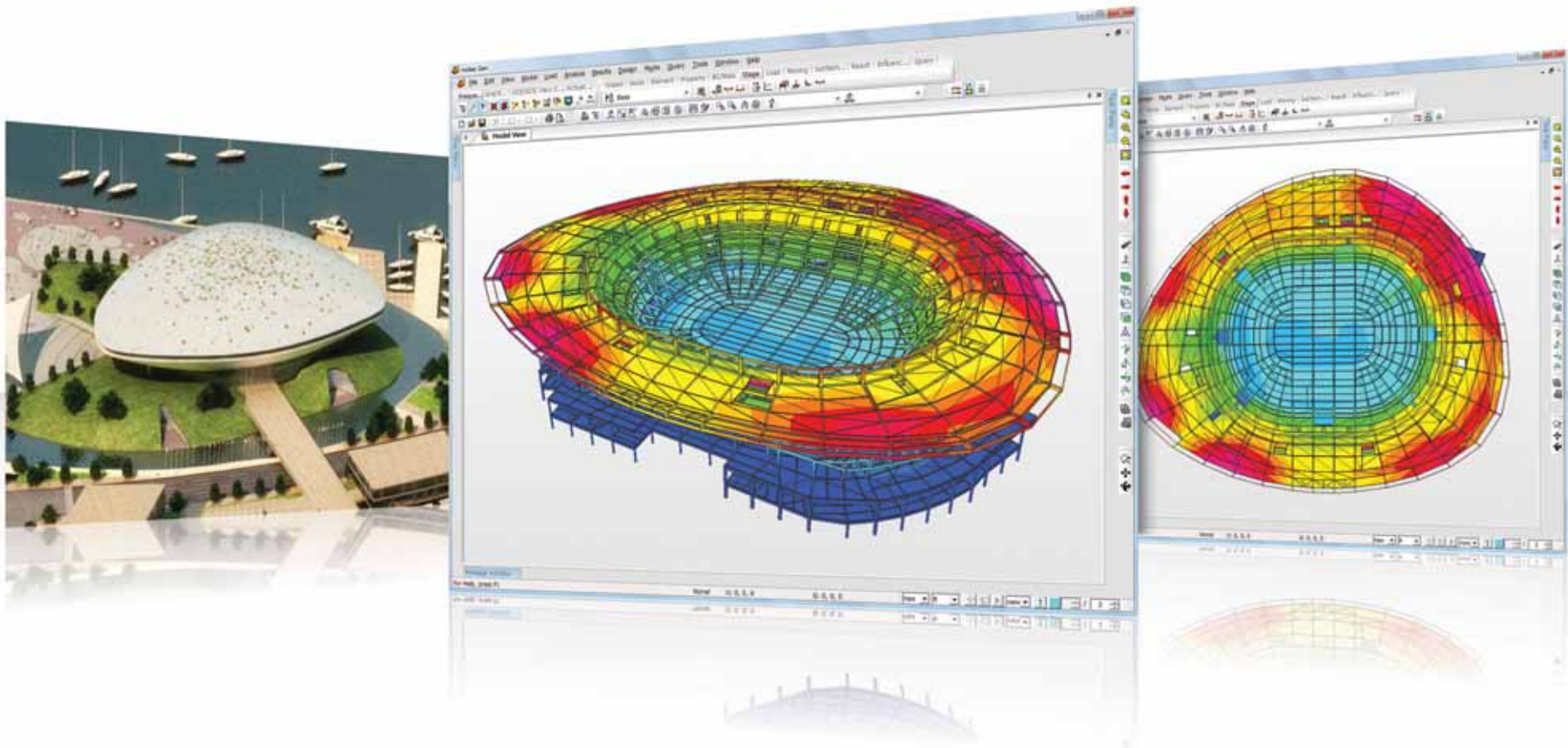
Israel Pavilion

The pavilion consists of three areas - Whispering Garden, Hall of Light and Hall of Innovations. The Whispering Garden is a green orchard that greets visitors as they enter the building. Some facilities will be installed to make the trees begin to “whisper” in both English and Chinese when visitors walk close to them, Haim Z. Dotan, chief designer of the pavilion, told Shanghai Daily. The hall of Light includes a 15-meter high screen. It will display films highlighting the country’s innovations and technological achievements.



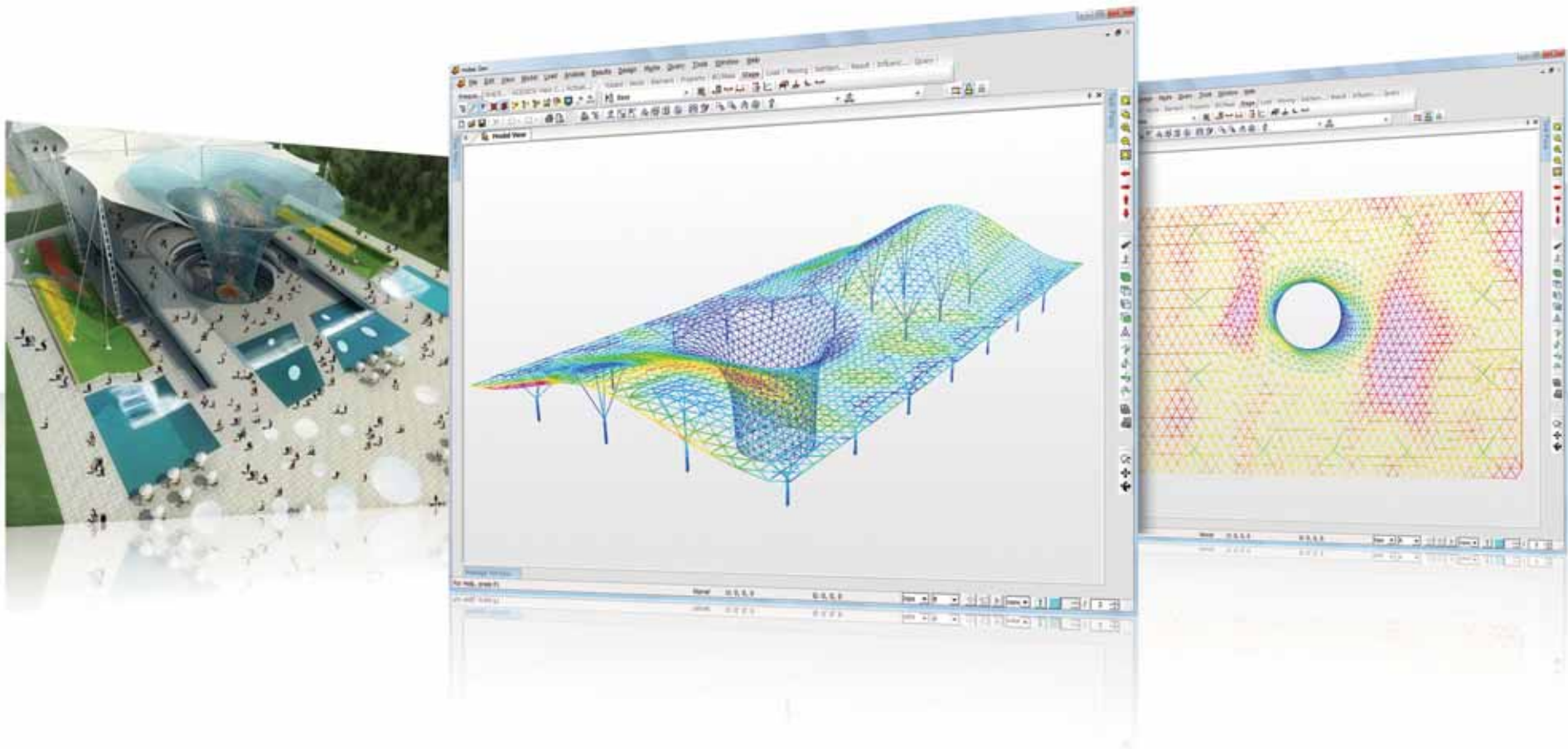
Performing Art Center

The performance center, which will hold most of the 20,000 Expo performances during the six-month Expo, was the last of the five permanent Expo buildings to start construction when work began in December 2007. The other four are the China Pavilion, Theme Pavilion, Expo Center and Expo Boulevard. The 126,000-square meter center will be the largest comprehensive performance arena in China. It will have two floors underground and four above ground. The seating configuration of the main auditorium, which has a center stage, can be changed to accommodate 4,000, 8,000, 12,000 or 18,000 seats depending on the requirements of the performance and the audience size.



Sunshine vale of the Axis

This “Sunny Valley” can collect rainfall and disperse sunshine into the underground level of the boulevard, said Ding Hao, deputy director general of the Bureau of Shanghai World Expo Coordination. Six of these horn-like structures will be built along the one-kilometer boulevard. It will also use river water for cooling. This can save 432,000 kilowatt hours of electricity and reduce carbon dioxide emissions by 432 tons every year. The Expo Boulevard is one of the gateways to Expo Park. The 2.4 million square meters construction is the largest in the park.



Theme Pavilion

The green and energy-efficient Theme Pavilion will cover 80,000 square meters above ground, and another 40,000 square meters underground. Exhibitions will cover 70,000 square meters. The major exhibition hall covers 30,000 square meters, without supporting pillars. The Theme Pavilion will be Shanghai's second-largest exhibition hall, after the New International Expo Center in Pudong, which has 100,000 square meters of exhibition areas.

